

Review

Open Access

Sinus lifting before Le Fort I maxillary osteotomy: a suitable method for oral rehabilitation of edentulous patients with skeletal class-III conditions: review of the literature and report of a case

Rita A Depprich*, Jörg GK Handschel, Christian Naujoks, Tobias Hahn, Ulrich Meyer and Norbert R Kübler

Address: Department for Cranio- and Maxillofacial Surgery, Heinrich-Heine-University Düsseldorf, Moorenstr. 5, 40225 Düsseldorf, Germany

Email: Rita A Depprich* - depprich@med.uni-duesseldorf.de; Jörg GK Handschel - handschel@med.uni-duesseldorf.de;

Christian Naujoks - depprich@med.uni-duesseldorf.de; Tobias Hahn - depprich@med.uni-duesseldorf.de; Ulrich Meyer - depprich@med.uni-duesseldorf.de; Norbert R Kübler - depprich@med.uni-duesseldorf.de

* Corresponding author

Published: 04 January 2007

Received: 31 July 2006

Head & Face Medicine 2007, 3:2 doi:10.1186/1746-160X-3-2

Accepted: 04 January 2007

This article is available from: <http://www.head-face-med.com/content/3/1/2>

© 2007 Depprich et al; licensee BioMed Central Ltd.

This is an Open Access article distributed under the terms of the Creative Commons Attribution License (<http://creativecommons.org/licenses/by/2.0>), which permits unrestricted use, distribution, and reproduction in any medium, provided the original work is properly cited.

Abstract

Background: Functional rehabilitation of patients afflicted with severe mandibular and maxillary alveolar atrophy might be challenging especially in malformed patients.

Methods: Treatment planning using sinus lifting and implant placement before Le Fort I maxillary osteotomy in a patient with severe mandibular and posterior maxillary alveolar atrophy and skeletal class-III conditions due to cleft palate are described.

Results: A full functional and esthetic rehabilitation of the patient was achieved by a stepwise surgical approach performed through sinus lifting as the primary approach followed by implant placement and subsequent Le Fort I maxillary osteotomy to correct the maxillo-mandibular relation.

Conclusion: Stabilisation of the maxillary complex by a sinus lifting procedure in combination with computer aided implant placement as preorthodontic planning procedure before Le Fort I maxillary osteotomy seems to be suitable in order to allow ideal oral rehabilitation especially in malformed patients.

Background

The aim of preimplant surgery is the creation of an environment that is favorable to the function and long-term survival of endosseous dental implants. One essential requirement for successful implantation is the presence of sufficient bone in which the implants are placed. Besides the quantity of bone, the quality of bone and the intermaxillary relation play an important role [1]. Due to extremely atrophied alveolar process of the maxilla (class

VI according to the classification of Cawood and Howell [2]) most patients suffer from a sagittal maxillary deficiency, a wide interarch distance and a reversed intermaxillary relationship giving patients an older appearance [3]. In these cases it is not sufficient to restore the lacking bone by onlay bone grafts or inlay bone grafts to the floor of the maxillary sinus [4], but to advise a simultaneous correction of the skeletal class-III conditions as described by Sailer 1989 [5].

The surgical approach of maxillary advancement is especially challenging in cleft patients due to the impaired bony situation.

This report describes a methodological approach of treating a patient with severe mandibular and posterior maxillary alveolar atrophy and skeletal class-III conditions due to cleft palate performing sinus lifting and implant insertion before Le Fort I maxillary osteotomy.

Case report

The patient was a 46-year-old man, afflicted with a cleft palate but no other serious diseases, when he first came to our department for consultation complaining his loose fitting denture and asking for prosthetic treatment.

Clinical and radiographic examination (including 3D DVT scan [digital volume tomography, New Tom 9000, New Tom Marburg, Germany]) revealed an edentulous moderately severe atrophied mandible, a partially edentulous maxilla, with severe posterior maxillary alveolar atrophy and skeletal class-III conditions due to cleft palate (figures 1 and 2).

In March 2004 extraction of the teeth 12, 17, 22, bilaterally sinus lifting procedure and a simultaneous alveolar

ridge augmentation of the maxilla and the mandible were performed under general anaesthesia. A mixture of cancellous bone from the iliac crest and Grafton®-DBM-Putty (Osteotech, Eatontown, NJ, USA) was used for the maxillary sinus floor augmentation. The lateral augmentation was performed using screw fixed autogenous corticocancellous block grafts and particulate bone grafts from the iliac crest mixed with Grafton®-DBM-Putty (Osteotech, Eatontown, NJ, USA). To fulfill the patient's desire the teeth 11 and 21 were left in the maxilla.

After three months screws were removed and auxiliary implants placed in the mandible.

6 weeks later screws were removed from the maxilla and using preoperative fabricated surgical guides a total of 12 endosseous Camlog® implants were accurately positioned in the mandible and the maxilla according to the predefined planning that was made up of DVT scan and a wax up. Again bone augmentation around the dental implants was performed using filter collected bone and a bioresorbable collagen membrane (BioMend Extend®, Zimmer Dental, Carlsbad, CA, USA).

Based on the ideal implant position temporary protheses were fabricated and used for performing the modell-oper-



Figure 1
Preoperative 3D DVT-scan (digital volume tomography, New Tom 9000, New Tom Marburg, Germany), right view (left) and left view (right): initial bony situation: moderately severe atrophied mandible, severe posterior maxillary alveolar atrophy and skeletal class-III conditions due to cleft palate.



Figure 2
Preoperative clinical situation front view (left) and lateral view (right): noticeable class-III occlusion.

ation to correct the maxillo-mandibular relation. Three months later Le Fort I osteotomy with high horizontal bone cut was performed under general anaesthesia. The carefully downfractured maxilla allowed an unique view from above to the grafted sinuses (figure 3). The grafted bone showed high consistency and stability and except for a small mucocele in the right sinus no signs of any inflammatory irritation were detected. According to the preoperative planning the maxilla was placed in the new advanced position and then fixed with microplates (figure 4).

Postoperative healing was uneventful, except for a local infection that occurred two month later in the left upper canine region therefore the implant there had to be removed.

Six month later after extraction of teeth 11 and 21 the miniplates were removed from the maxilla and the implants uncovered. In addition abutments with protective healing caps were installed. After placing definite abutments and removing the auxiliary implants final restoration was placed (figure 5).

Discussion

The main basic criteria for restauration of the edentulous maxilla and mandible are adequate bone mass and orthoalveolar form [6]. This can be achieved by augmentation of the available substrate using established techniques such as vertical and lateral augmentation of the alveolar ridge, sinus floor bone grafting and orthognathic surgery [5,7-9]. Dependend on the initial situation one or more of these options can be used to improve load-bearing capacity for implants, whereas the use of vertical alveolar grafting for augmentation without implant

placement is ineffective for bone mass maintenance in the long run [6,10].

Orthoalveolar form is the concept for optimal restauration of the edentulous alveolar ridge and means an idealized alveolar bone positioned in class I relation axially aligned to the opposing arch [6].

The resorptive pattern of the edentulous maxilla and mandible often leads to a discrepancy between the jaws such that a significant class III malocclusion occurs [11].

Edentulous patients with a skeletal class III jaw relationship have a poor chance of successful oral rehabilitation if they are provided exclusively with implant-supported prostheses unless supplementary surgery is also provided [5,12,13]. Implant-retained overdentures in fact offer the feasibility to compensate the retruded maxilla by placing prosthetic teeth anterior to the maxillary alveolar process, but that means a loss of the advantages of fixed tissue-integrated prostheses, which have been described in longitudinal studies [13,14].

Sailer published a method of Le Fort I osteotomy in combination with simultaneously bone grafting in the anterior and posterior maxilla and placement of endosseous implants for treatment of patients with atrophied maxillary alveolar bone and class III jaw relationship [5]. This sandwich technique permits simultaneous correction of the sagittal intermaxillary relationship and the vertical dimension. Some authors emphasize the advantages and satisfactory long-term results of the one stage procedure [4,15], but others prefer the two stage method as the long-term results are slightly superior to the one step procedure and simultaneous insertion of endosseous implants

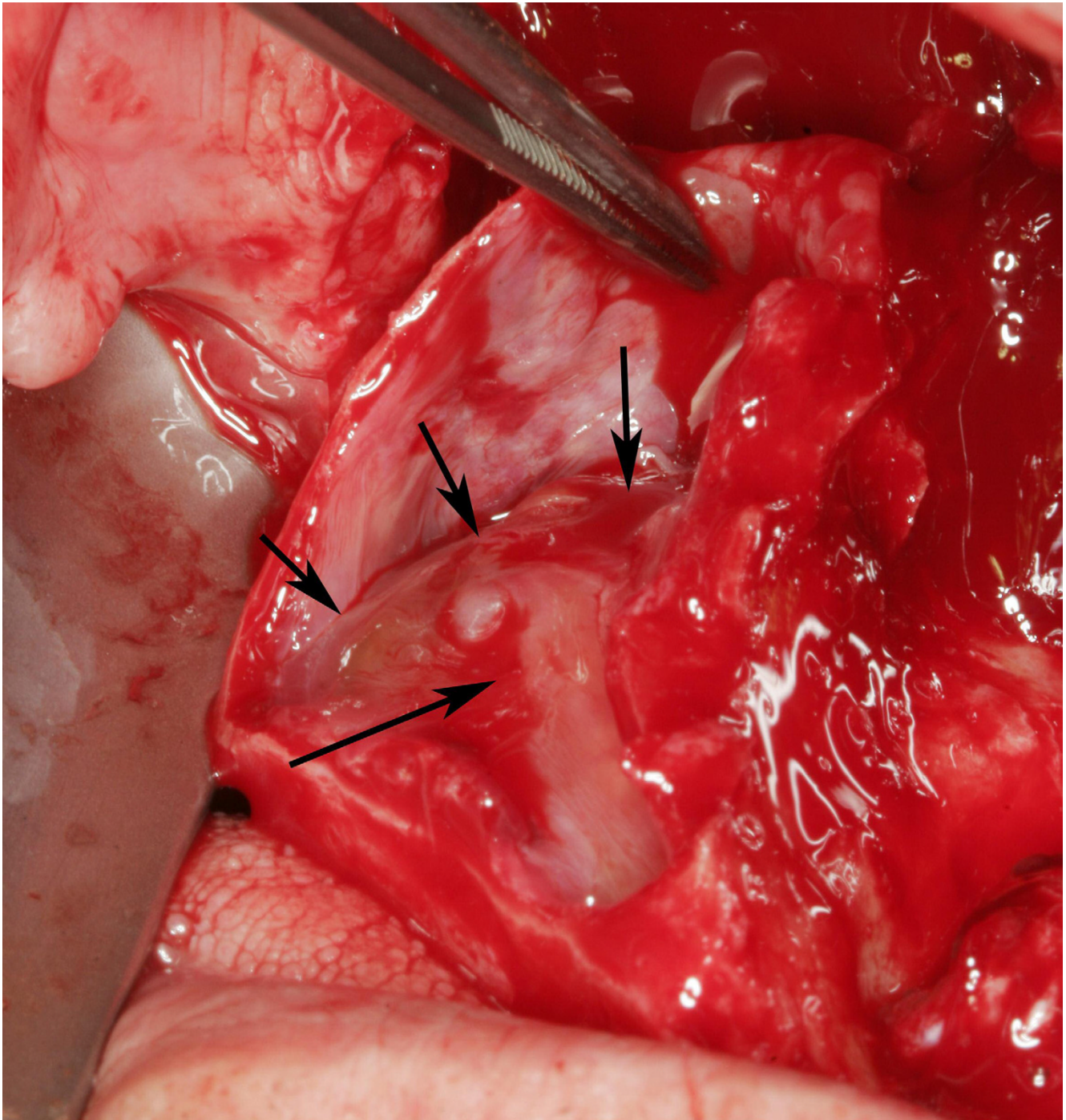


Figure 3
View from above to the grafted right maxillary sinus. Top of the former sinus augmentation (arrows)

increases the risk of bone necrosis and makes it difficult to achieve optimal position and angulation of the inserted implants [16-18].

A similar variant of the maxillary sandwich osteotomy for the rehabilitation of the severely atrophied maxilla is the

horseshoe Le Fort I osteotomy where the horseshoe-shaped alveolar ridge is moved down and anterior after osteotomy and the hard palate remains pedicled on the nasal septum and vomer [3,19-24]. This technique is indicated in cases with flat palatal vault as the hard palate is not relocated and only the alveolar crest is moved in a

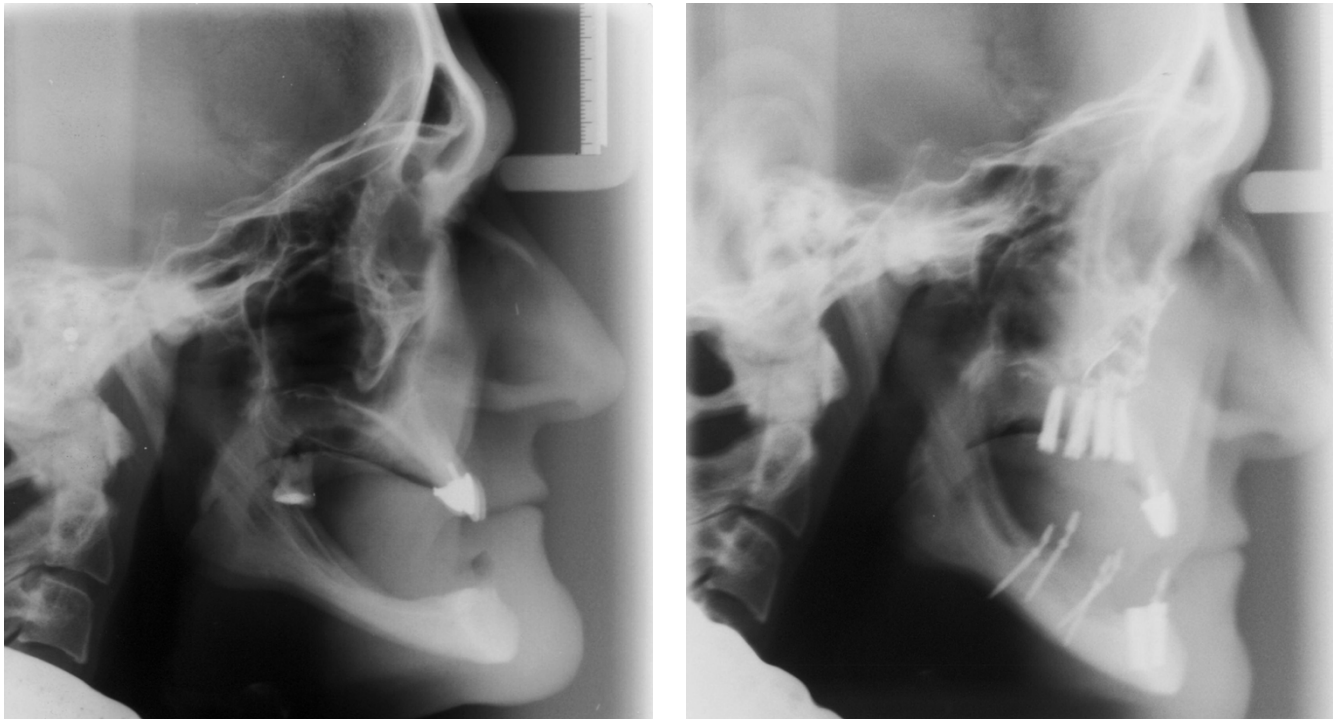


Figure 4
Preoperative (left) and postoperative (right) radiographs: improvement of the intermaxillary relationship after orthognathic surgery.

favorable place thus resulting in a well shaped palatal vault that helps avoiding speech impairment and tongue displacement [3]. Analysis of the long term implant survival rate after one- or two stage implant insertion in the augmented maxilla showed no statistically significant differences [3,24].

Recently the concept of horizontal distraction osteogenesis for treatment of the atrophied anterior maxilla in combination with bilateral sinuslift operation was published [25]. The authors presented good results of implant osseointegration in the distracted bone during a follow up period of one year. They emphasize the alternative technique for correction of the interalveolar incongruences in the edentulous maxilla and augmentation prior to implant placement. However the main disadvantage of distraction osteogenesis is the need for enough bone as basis for regeneration and fixation of a stable distractor.

In our patient we found a moderately severely atrophied mandible and severely atrophied posterior maxilla and a skeletal class III jaw relationship amongst others due to the cleft palate. Minor degree maxillary alveolar atrophy was found in the anterior maxilla because of the still remaining teeth there.

The first step of our treatment concept was to reconstruct adequate bone mass by bilateral sinus lifting and onlay bone graft in the mandible and maxilla. On the way to configure ortholalveolar form we first placed the endosseous implants and then performed a classic Le Fort I osteotomy as described by Bell et al. [26]. Planning of orthognathic surgery was carried out on the basis of the implant borne temporary prostheses in ideal position.

The new method described is particularly recommendably to treat patients with atrophic maxilla and mandibula and a skeletal class III jaw relationship but minor degree vertical deficiency.

The advantages of our stepwise treatment are:

1. classic sinus lifting can be performed with a nearly predictable good result
2. two stage implant insertion offers better placement opportunities and proper implant stability than the one stage procedure
3. implant placement before maxillary osteotomy avoids bone loss resulting from an extensive healing period and



Figure 5
Postoperative clinical situation front view (left) and lateral view (right): noticeable class-I occlusion.

permits favorable conditions for exact adjustment of the postoperative prosthetic outcome

4. implants can be used for exact planning orthognathic surgery
5. classic le Fort I osteotomy can be performed, the previous sinus lifting stabilizes the fragile edentulous maxilla and reduces the risk to fracture
6. implants can be early loaded after healing period of orthognathic surgery is completed

The disadvantages of the treatment are:

It is a longsome treatment that requires at least two surgical procedures under general anaesthesia and the removal of bone from the iliac crest. Different from the method described by Sailer [5] our technique permits correction of the sagittal intermaxillary relationship but no gain of bone height in the vertical dimension.

Conclusion

Sinus lifting before Le Fort I maxillary osteotomy is a particularly suitable method for oral rehabilitation of edentulous patients with skeletal class-III conditions and minor degree vertical deficiency especially in malformed patients.

References

1. van den Bergh JP, ten Bruggenkate CM, Tuinzing DB: **Preimplant surgery of the bony tissues.** *J Prosthet Dent* 1998, **80(2)**:175-183.
2. Cawood JI, Howell RA: **A classification of the edentulous jaws.** *Int J Oral Maxillofac Surg* 1988, **17(4)**:232-236.
3. Yerit KC, Posch M, Guserl U, Turhani D, Schopper C, Wanschitz F, Wagner A, Watzinger F, Ewers R: **Rehabilitation of the severely atrophied maxilla by horseshoe Le Fort I osteotomy (HLFO).** *Oral Surg Oral Med Oral Pathol Oral Radiol Endod* 2004, **97(6)**:683-692.
4. Isaksson S, Ekfeldt A, Alberius P, Blomqvist JE: **Early results from reconstruction of severely atrophic (Class VI) maxillas by immediate endosseous implants in conjunction with bone grafting and Le Fort I osteotomy.** *Int J Oral Maxillofac Surg* 1993, **22(3)**:144-148.
5. Sailer HF: **A new method of inserting endosseous implants in totally atrophic maxillae.** *J Craniomaxillofac Surg* 1989, **17(7)**:299-305.
6. Jensen OT, Leopardi A, Gallegos L: **The case for bone graft reconstruction including sinus grafting and distraction osteogenesis for the atrophic edentulous maxilla.** *J Oral Maxillofac Surg* 2004, **62(11)**:1423-1428.
7. Shirota T, Ohno K, Motohashi M, Michi K: **Histologic and micro-radiologic comparison of block and particulate cancellous bone and marrow grafts in reconstructed mandibles being considered for dental implant placement.** *J Oral Maxillofac Surg* 1996, **54(1)**:15-20.
8. Wheeler SL, Holmes RE, Calhoun CJ: **Six-year clinical and histologic study of sinus-lift grafts.** *Int J Oral Maxillofac Implants* 1996, **11(1)**:26-34.
9. Tinti C, Parma-Benfenati S: **Vertical ridge augmentation: surgical protocol and retrospective evaluation of 48 consecutively inserted implants.** *Int J Periodontics Restorative Dent* 1998, **18(5)**:434-443.
10. Baker RD, Terry BC, Davis WH, Connole PW: **Long-term results of alveolar ridge augmentation.** *J Oral Surg* 1979, **37(7)**:486-489.
11. Jones RH: **Orthognathic surgery and implants.** *Ann R Australas Coll Dent Surg* 2002, **16**:105-108.
12. Laney VWR: **Selecting edentulous patients for tissue-integrated prostheses.** *Int J Oral Maxillofac Implants* 1986, **1(2)**:129-138.
13. Weingart D, Joos U, Hurlzeler MB, Knode H: **Restoration of maxillary residual ridge atrophy using Le Fort I osteotomy with simultaneous endosseous implant placement: technical report.** *Int J Oral Maxillofac Implants* 1992, **7(4)**:529-535.
14. Adell R, Eriksson B, Lekholm U, Branemark PI, Jemt T: **Long-term follow-up study of osseointegrated implants in the treatment of totally edentulous jaws.** *Int J Oral Maxillofac Implants* 1990, **5(4)**:347-359.
15. Li KK, Stephens WL, Gliklich R: **Reconstruction of the severely atrophic edentulous maxilla using Le Fort I osteotomy with simultaneous bone graft and implant placement.** *J Oral Maxillofac Surg* 1996, **54(5)**:542-6; discussion 547.
16. Cawood JI, Stoeltinga PJ, Brouns JJ: **Reconstruction of the severely resorbed (Class VI) maxilla. A two-step procedure.** *Int J Oral Maxillofac Surg* 1994, **23(4)**:219-225.
17. Nystrom E, Lundgren S, Gunne J, Nilson H: **Interpositional bone grafting and Le Fort I osteotomy for reconstruction of the**

- atrophic edentulous maxilla. A two-stage technique.** *Int J Oral Maxillofac Surg* 1997, **26(6)**:423-427.
18. Kahnberg KE, Nilsson P, Rasmusson L: **Le Fort I osteotomy with interpositional bone grafts and implants for rehabilitation of the severely resorbed maxilla: a 2-stage procedure.** *Int J Oral Maxillofac Implants* 1999, **14(4)**:571-578.
 19. Harle F, Ewers R: **[Horseshoe-shaped osteotomy with bone interposition in order to raise the maxillary crest. An operating method stopped after the experiment].** *Dtsch Zahnarztl Z* 1980, **35(1)**:105-107.
 20. Gossweiner S, Watzinger F, Ackerman KL, Ewers R: **Horseshoe Le Fort I osteotomy: an augmentation technique for the severely atrophied maxilla--an eight-year follow-up.** *J Long Term Eff Med Implants* 1999, **9(3)**:193-202.
 21. Obwegeser HL, Farmand M: **[Horseshoe sandwich osteotomy of the edentulous maxilla with simultaneous submucosal vestibuloplasty. A method for the advancement and deepening of the edentulous maxillary alveolar process with simultaneous elevation of the palatal arch].** *Schweiz Monatsschr Zahnmed* 1984, **94(5)**:390-398.
 22. Farmand M: **Horse-shoe sandwich osteotomy of the edentulous maxilla as a preprosthetic procedure.** *J Maxillofac Surg* 1986, **14(4)**:238-244.
 23. Watzinger F, Ewers R, Millesi W, Kirsch A, Glaser C, Ackermann KL: **Horseshoe Le Fort I osteotomy in combination with endosteal implants--a median-term follow-up study.** *Int J Oral Maxillofac Surg* 1996, **25(6)**:424-429.
 24. Yerit KC, Posch M, Hainich S, Turhani D, Klug C, Wanschitz F, Wagner A, Watzinger F, Ewers R: **Long-term implant survival in the grafted maxilla: results of a 12-year retrospective study.** *Clin Oral Implants Res* 2004, **15(6)**:693-699.
 25. Gaggl A, Rainer H, Chiari FM: **Horizontal distraction of the anterior maxilla in combination with bilateral sinuslift operation--preliminary report.** *Int J Oral Maxillofac Surg* 2005, **34(1)**:37-44.
 26. Bell WH, Buche WA, Kennedy JW 3rd, Ampil JP: **Surgical correction of the atrophic alveolar ridge. A preliminary report on a new concept of treatment.** *Oral Surg Oral Med Oral Pathol* 1977, **43(4)**:485-498.

Publish with **BioMed Central** and every scientist can read your work free of charge

"BioMed Central will be the most significant development for disseminating the results of biomedical research in our lifetime."

Sir Paul Nurse, Cancer Research UK

Your research papers will be:

- available free of charge to the entire biomedical community
- peer reviewed and published immediately upon acceptance
- cited in PubMed and archived on PubMed Central
- yours — you keep the copyright

Submit your manuscript here:
http://www.biomedcentral.com/info/publishing_adv.asp

